



Instructions to Convert LaserCon (Version-1.x) for use with The PR-8210 and LD-1100 Laser Disc Players - Using IR

by Shaun D. Wood

shaun@wood1st.com

Early versions of the LaserCon LDP Conversion card do not have the proper connectors to support games which use the Pioneer PR-8210 or LD-1100 laser disc players.

This document will show you how to add the proper connection to your version 1.x LaserCon board to support **PR-8210, PR-8210A and LD-V1100** games when interfacing to the game board via IR remote-control.

Note: These instructions are only for games using the infrared (IR) remote-control type interface to the front of your player. If your player uses the direct link cable to the back of your player, use these instructions:

http://wood1st.com/LaserCon/Docs/LC_Conv8210plug.pdf

Parts List:

1 - 2 pin header (Molex 22-23-2021)

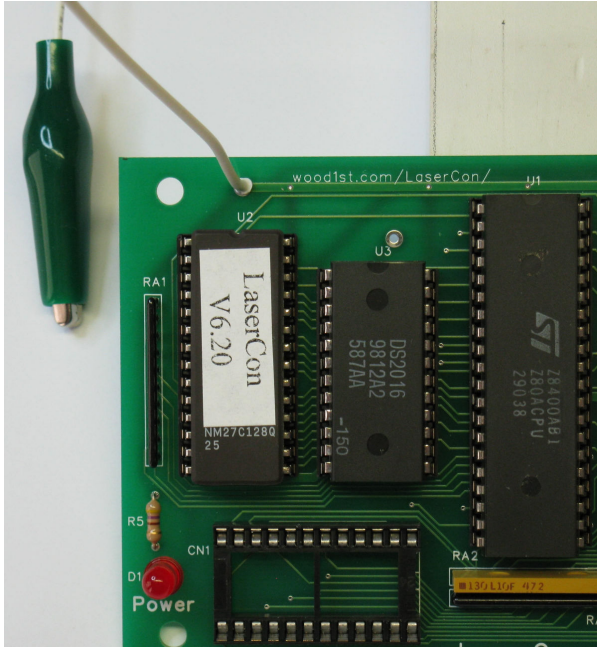
1- 470 ohm resistor - 1/4 Watt

Some spare bits of wire

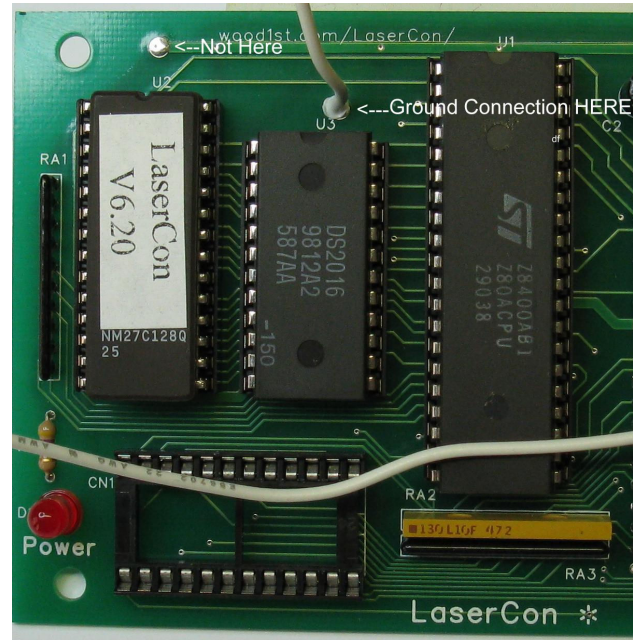
A LaserCon board - Version 1.x

Step 1:

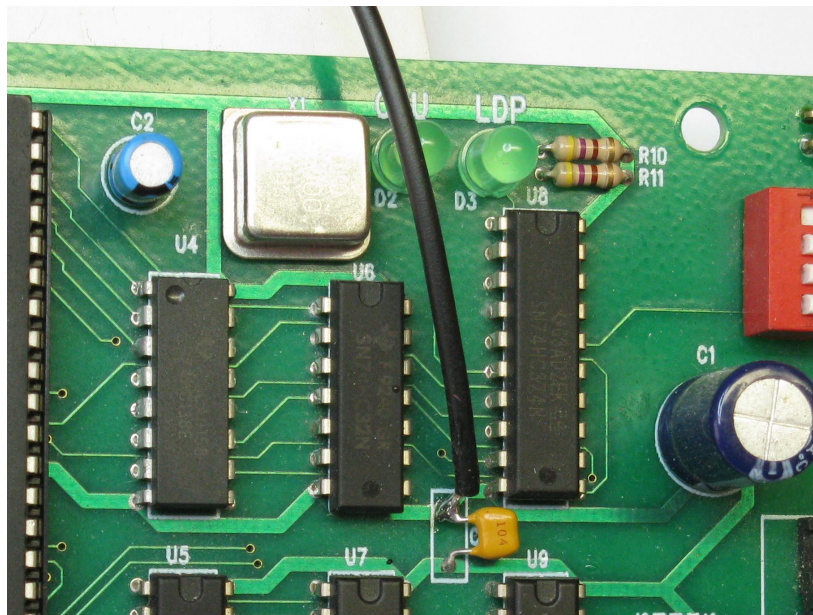
Move the power wire (alligator clip wire) from +5 Volts to Ground.



Move the wire from here



to here (board version 1.3x)

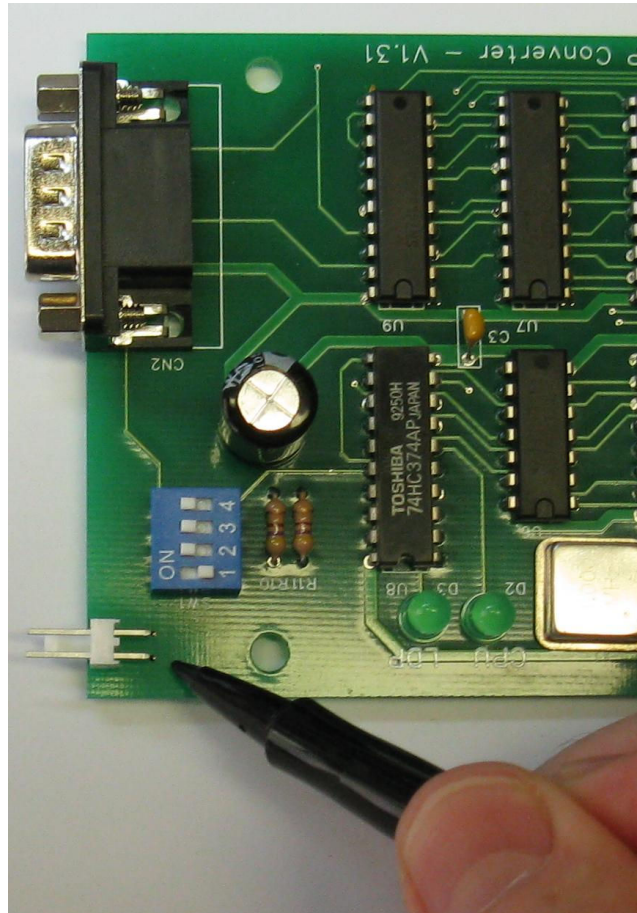
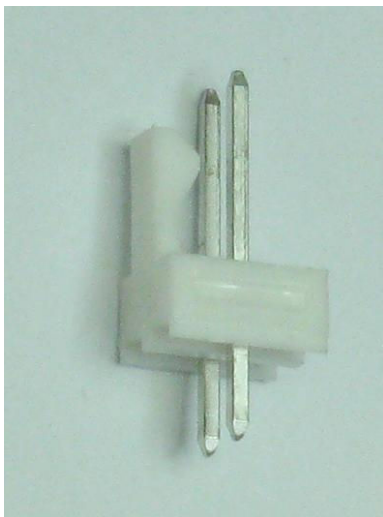


Or to here (board version 1.2 or earlier)

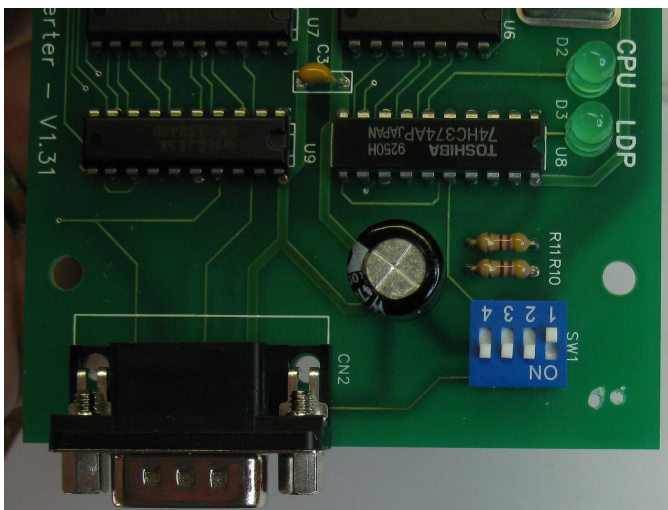
The alligator clip will now be used to supply a ground connection to LaserCon.

Step 2:

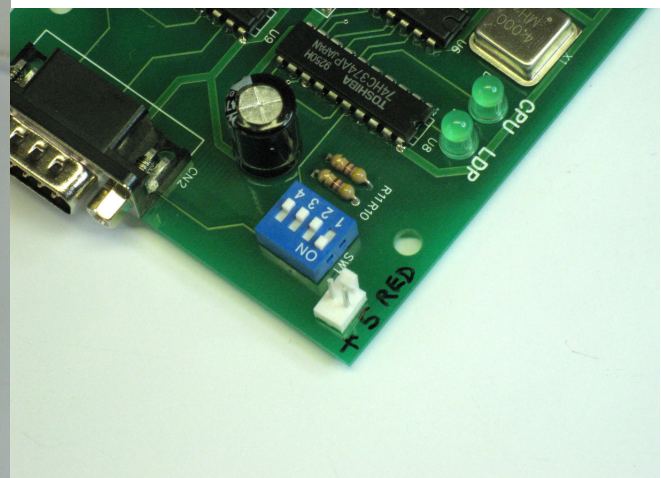
Drill holes for new connector.



Mark location to drill with sharpie

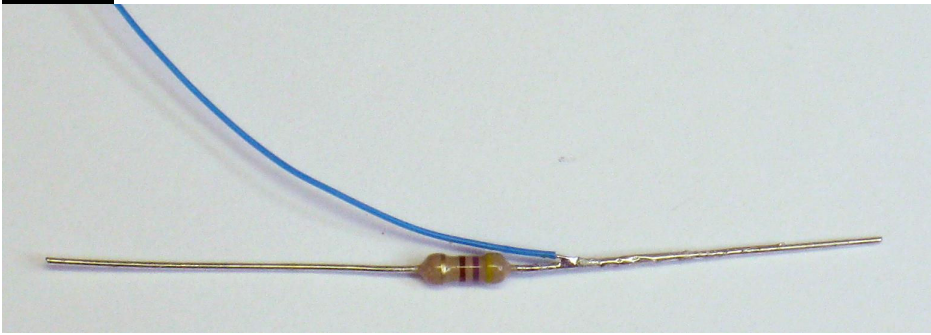


use 1/16" drill bit.

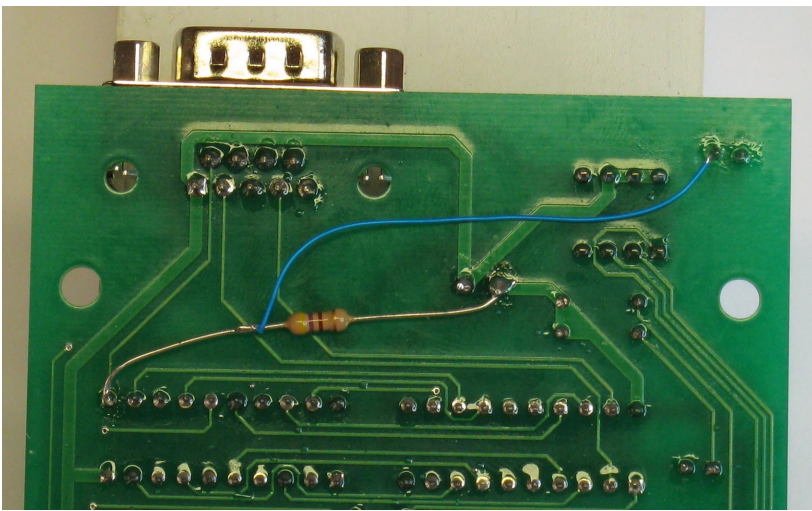


Set in part with clip to the rear.
Use solder blobs to hold into place.

Step 3:

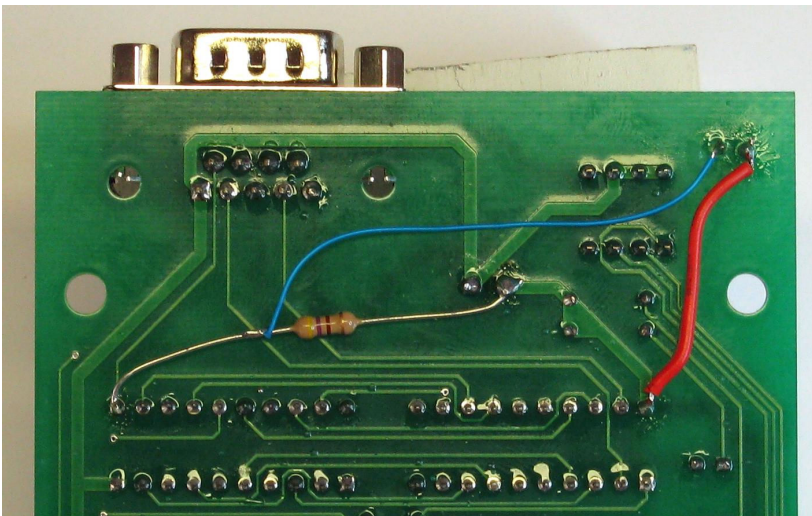


Solder a wire to a 470 ohm resistor.



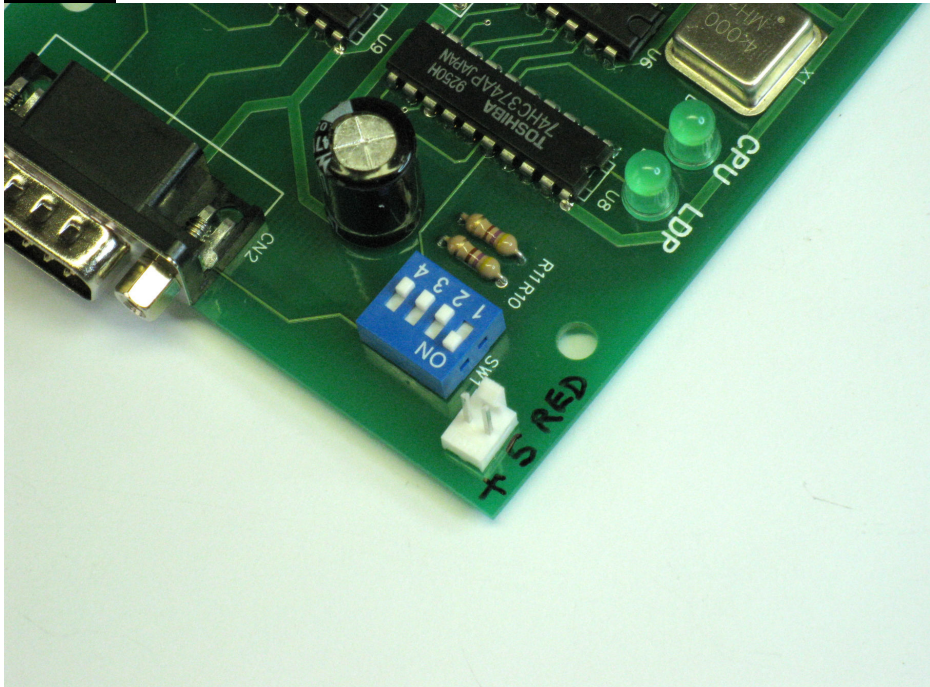
Solder into place as shown above.

The 470 ohm resistor should connect U9 pin-11 to the positive (+) side of capacitor C1.
The wire should connect U9 pin-11 to the near side of the new 2 pin connector.

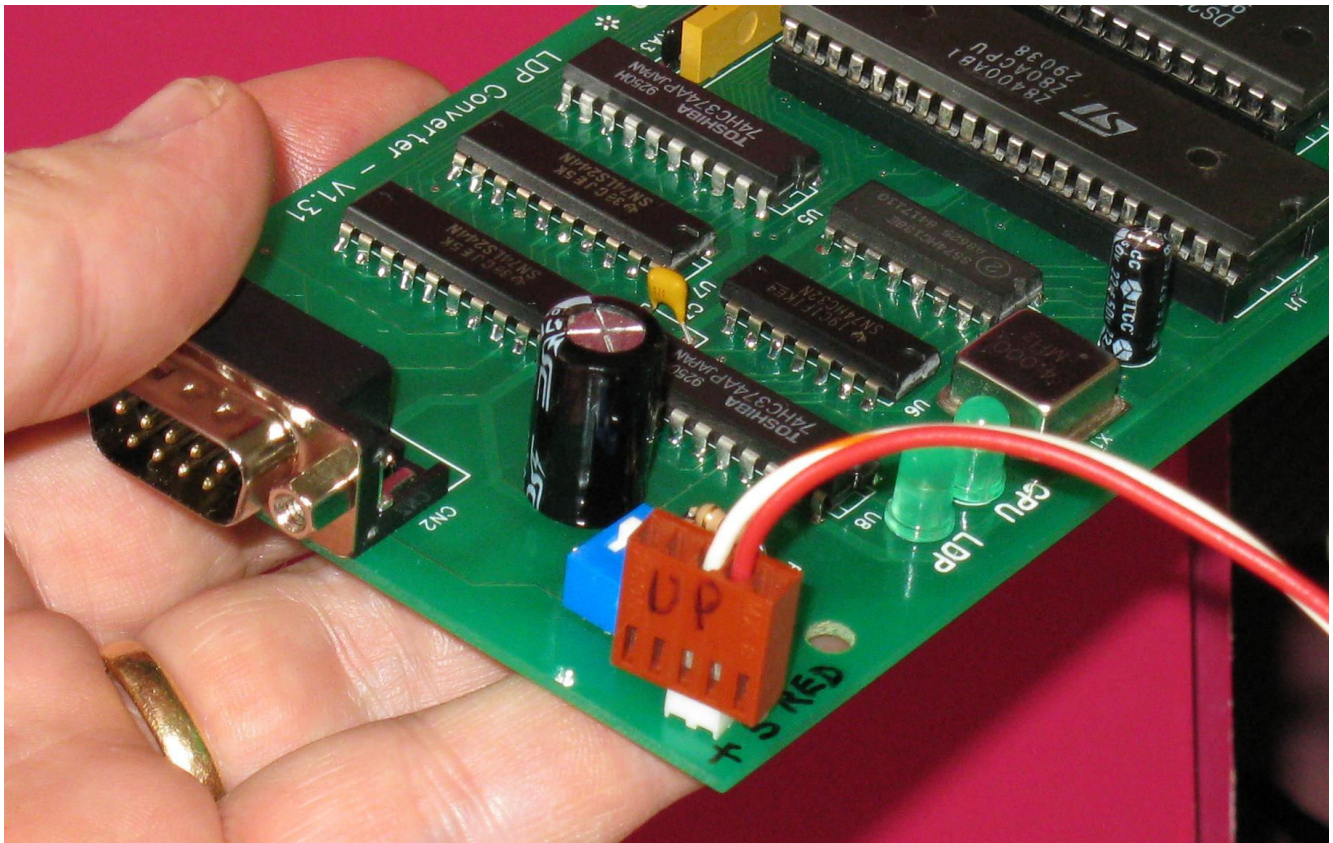


Add a wire from U8 pin-20 (+5V) to the far side of the new 2 pin connector.

Step 4:



+5 Volts will be supplied to the board through this 2-pin connector.
Mark the right side pin to indicate +5V.



Note that the RED wire from the game MUST connect to the right side pin.

Install LaserCon Firmware Version 7.0 or higher.

Done!

Your LaserCon board can now operate your PR-8210/A or LD-1100 game.

The wire going to the IR transmitter will now connect to this new 2-pin header, as seen in the above photo.

Download and follow the individual instructions for setting up the game of your choice.

<http://wood1st.com/LaserCon/LDPC/>

Disclaimer

Use at you own risk. By accepting this product, you also accept all responsibility for the use of this product and release its manufacturer, Shaun D. Wood, from all possible responsibilities for damages, or difficulties, that the user has incurred due to use or misuse of this product.

And Finally...

LaserCon is an open source project. If you want to write code for other games or players and would like to have copies of the schematics and firmware files, contact me, or visit <http://wood1st.com/LaserCon/>. Please consider donating your work to be included in future releases of LaserCon.

If you need any help or have any questions, comments, or suggestions, please contact me: shaun@wood1st.com.